



Long Lawford Primary School

Love, Learn, Persevere and Succeed

Friday 3rd September 2021

Welcome Back!

Dear Families,

Welcome back to Long Lawford Primary School for yet another fantastic year of **loving, learning, persevering** and **succeeding!** I hope you have all had a lovely, restful break and looking forward to getting back to school next week.

As you all know, during the holiday, Central Government updated guidance for school opening, which will be spoken about in further detail below. The guidance can be found at: <https://www.gov.uk/government/publications/actions-for-schools-during-the-coronavirus-outbreak/schools-covid-19-operational-guidance>

I am pleased to let you all know that, during the school holidays, we have finally been able to re-start our refurbishment project within the school building. We have concentrated on EYFS but will move through the school over the coming 12-18 months. We have installed some new toilets in EYFS as the old ones were not the right size for the children and therefore not fit for purpose. They were also very old! We've also installed a fit-for-purpose disabled toilet and small kitchenette for staff/visitors to use. Egress doors have also been installed in all Year 3 classrooms, supporting entry and exit of school as well as outdoor learning. Keep an eye on our social media for pictures!

Over the next 12-18 months we will continue with toilet refurbishments across the school for the older toilet blocks. We will be looking at installing an outdoor classroom to support our delivery of Forest School (coming soon!), re-designed learning mentor hubs, a new bike store for the bottom playground, improved EYFS outdoor area and ongoing redecoration where needed on top of our great curriculum delivery.

September Arrangements

The children will return to school on Monday 6th September and all staff are looking forward to seeing them and finding out what interesting things they have done over the holidays.

We will continue with **staggered starts/ends of day** as follows:

N – 8:30am/11:30am

R – 8:40am/2:55pm

Y1 – 8:45am/3pm

Y2 – 8:45am/3pm

Y3 – 8:50am/3:05pm

Y4 – 8:50am/3:05pm

Y5 – 8:40am/2:55pm

Y6 – 8:40am/2:55pm

We've decided to keep these timings for the time being for two reasons:

- The number of adults on school site at any given time is as few as possible in light of the high number of local cases.
- Traffic has reduced around the school

School leaders will continue to monitor this and tweak if needed. Children will be able to go straight into their classrooms at the times above.

The one way system will remain for the time being, with all children and adults entering through the park gate. The one way plan has been updated to include the **new classroom doors for Year 3** (below). Year 4 will be upstairs in the newer part of the building and will enter through the door next to Year 5. Improvement works around Year 1 continue, therefore Y1 Sea Horse and Y1 Starfish classes will come in through the main Y1 door, and Y1 Turtles will come in through their external classroom door. **We will no longer limit the number of adults on site to one adult per family**, but again ask our parents/carers to support us with keeping the number of adults on site to a minimum at this present time. **School staff will be present at the school gates** and are happy to help where they can.

We continue to ask our parents and carers to **not congregate on school site** or near to the school gates. This is to limit the spread of the virus.

Communication with admin team will remain as virtual as possible (via email or phone) whilst local cases remain high. They are happy to help where they can.

Hot meal provision for all year groups will resume. Children will no longer eat from deli-bags in their classroom. We will **keep lunch to 45 minutes** and assign a playground space for children to use in their year groups. We have found that this helps to reduce behaviour issues during this unstructured time. Those bringing packed lunch (or selecting the deli-bag option from the broader menu) will eat in the new small hall. There are no restrictions on use of lunch boxes/bags. To book your child a school meal, please log into SIMSPay. If you have any problems with this facility, please contact the admin team who will be happy to help.

Bringing **items from home** such as pencil cases etc to share or use in school can resume, but we ask parents to be cautious. The number of cases is high at present, and we ask parents to continue to limit items going to and from school (as school will continue to do).

PE will continue as it has previously. Some sessions will be taught by Mr Owen and some by the class teacher. We will **continue with wearing PE kits on the days that children are having PE** for the time being.

School uniform can still be purchased from Brigade, but there is a slight delay. Whilst Long Lawford does not insist on children wearing logo'd uniform, we do expect that children wear clothes linked to our uniform. For example, if you do not have a logo'd jumper, we expect a jumper of the same colour to be worn (which are available for reasonable prices at local super markets). Children should not wear jewellery other than sleepers, watches (that are not smart watches) or specific jewellery pieces for religious reasons and as agreed by SLT. We also expect black school shoes appropriate to the weather, not trainers of bright colours. You can find more information about our uniform on our school website, [here](#).

Although the **wearing of face coverings** is no longer mandatory, we ask that mask wearing continues where possible for the time being (and in response to local cases remaining high). We thank you all in advance for supporting us all to remain as safe as possible.

Ventilation in classrooms/frequently used rooms will remain. As the weather turns colder, please ensure your child wears appropriate clothing/layers so that they do not get too cold.

Assemblies will begin to resume face-to-face rather than being undertaken virtually. However, we will refrain from inviting parents/carers in to watch assemblies on school site for the moment due to the high number of local cases. This will be reviewed at the end of this half term.

As done previously, we ask that parents/carers **inform the school if you or your child has tested positive for COVID-19**. This will enable us to liaise with WCC and Department of Public Health to implement our Outbreak Management Plan as needed, and will continue to support NHS Test and Trace. Our highest priority is the ongoing safety of our school community.

As our **Outbreak Management Plan** will outline, some previously seen control measure may have to be reinstated (such as bubbles) should there be an outbreak in our school. An outbreak is defined as:

- 2+ *linked* cases within 14 days
- 3+ cases within a group in the setting within 5 days
- 5+ cases across a setting within 5 days
- 3+ staffing cases, or fewer if impacting on the capacity of the setting to operate

As with anything, we will seek advice as appropriate from WCC and DHP/PHE before reinstating any control measures. We will also endeavour for control measures to be reinstated for as short a time as possible. The school may, as a support to **NHS Test and Trace**, inform possible close contacts of a positive case. We will do this via email as we have done previously.

Swimming for Key Stage 2 will resume. Year 4 will be in the Autumn Term, Year 5 will be in the spring term and Year 6 will be in the Summer term. Swimming is organised very differently following the pandemic, and information about the arrangements has already been sent to parents. The school and the Diamond Jubilee Centre have worked closely to ensure that swimming lessons remain COVID safe. Please let the school know if you require any further information with regards to swimming.

The school's **website will be updated** in the coming days with information for September. One of the updates includes new class names, chosen by our very own School Council. **Classes will be known as animal/insect names** from now on (on the below one way map to help you – apologies it is a little small!). Here are the new class names and teachers:

FS1 – **Caterpillars** – Miss Monaghan

FS2 – **Ladybirds** – Miss Butcher

FS2 – **Bumblebees** – No Class

FS2 – **Butterflies** – Mrs Bird

Yr. 1 – **Turtles** – Mrs Harrison and Mrs Tanner

Yr. 1 – **Starfish** – Miss Gohil

Yr. 1 – **Sea Horse** – Miss Lowe

Yr. 2 – **Dolphins** – Mrs Crinigan

Yr. 2 – **Sharks** – Miss Hunt

Yr. 2 – **Octopus** – Miss Sheasby

Yr. 3 – **Owls** – Miss Jeskins

Yr. 3 – **Woodpeckers** – Mr Sutcliffe

Yr. 3 – **Hedgehogs** – Miss Berry

Yr. 4 – **Badgers** – Miss Campbell

Yr. 4 – **Squirrels** – Mr Brown

Yr. 4 – **Foxes** – Mr Grady

Yr. 5 – **Tigers** – Mr Davies

Yr. 5 – **Snow Leopards** – Mr Watts

Yr. 5 – **Jaguars** – Miss Keown

Yr. 6 – **Elephants** – Miss Chan

Yr. 6 – **Giraffes** – Mrs Lomas

Yr. 6 – **Zebras** – Miss Kumari

Positive Cases

If there is a positive case in school, or if a child/member of staff/visitor displays any of the top 3 symptoms, they will be **sent home without delay**. We will isolate the child/member of staff/visitor until they are able to safely go home. There are also lesser symptoms such as diarrhea, vomiting, headache, fatigue etc. which may also result in your child being sent home as a precaution. As we did last year, we ask that **anyone who is unwell does not attend school site**.

Shielding is no longer in effect, but if you have any concerns about you or your child attending school site due to a medical condition, please speak to a member of staff and we will help where we can.

If we experience an outbreak (as outlined above), the school may be advised to **reinstate some control measures** (such as bubbles or partial closures). If the school is advised to do so, we will communicate this with you all at the earliest opportunity. This will also be outlined in our Outbreak Management Plan.

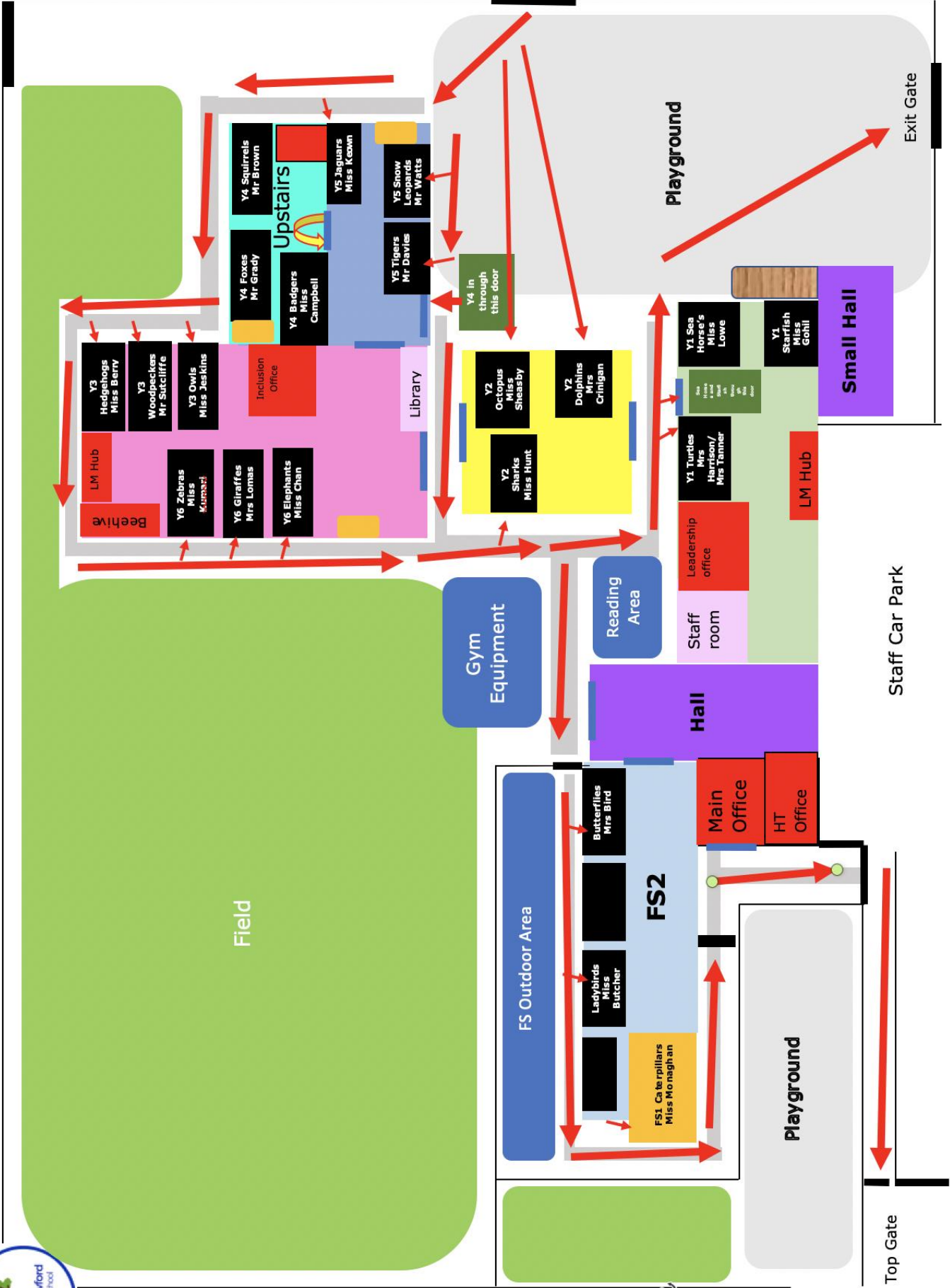
As before, **attendance is mandatory again**. It is important that children attend school regularly. However, if children are unwell, they should stay at home until they are better. If you have any concerns with your child attending school, please speak to Mrs Barton or Mrs McSweeney who will be happy to help.

The Local Authority have **updated term dates for this academic year**, which are now available on our school website.

As always, if you have any concerns or comments, please get in touch with our school team, and we will help where we can.

Yours sincerely,

Mrs. Claire Stringer
Headteacher



Top Gate

Exit Gate

Park Gate